

# SCHALTGERÄTE

## Komplett-Typen Baureihe ML

### Complete types Series ML

#### Hauptschalter/ Not-Aus-Schalter

Fronteinbau E

#### Main switches Emergency-off switches

Front mounting E



\*MLO IP 55  
IP 65

#### Fronteinbau mit 4-Lochbefestigung

Anschlusschrauben sind von hinten zugänglich

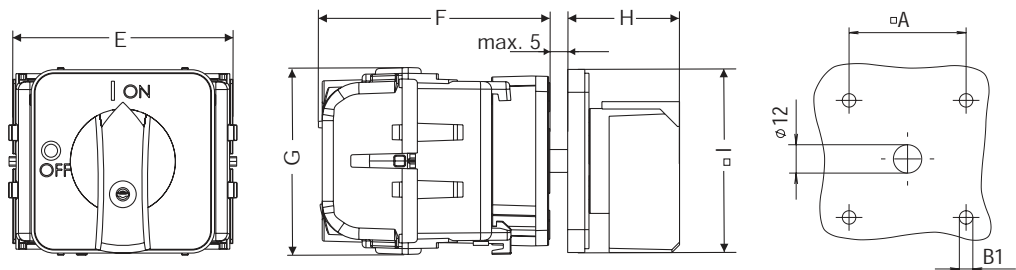
Griff/Frontschild  
schwarz/silber sw/si oder  
rot/gelb rt/ge (mit Not-Aus Funktion)

#### 4-hole front mounting

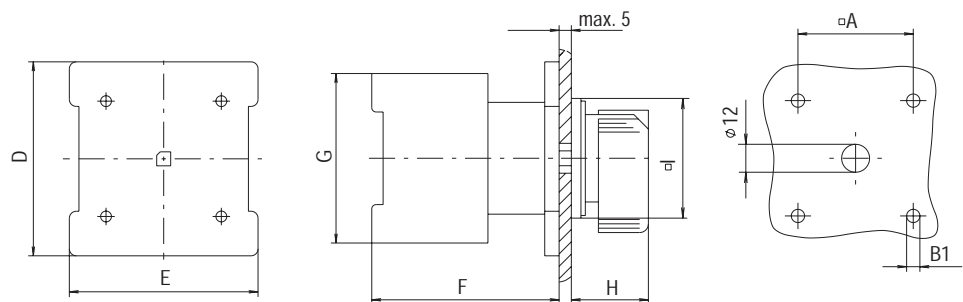
terminal screws are accessible  
from the rear

handle/front plate  
black/silver bk/si or  
red/yellow rd/ge (with Emergency-off function)

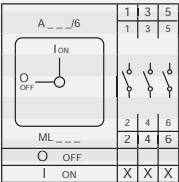
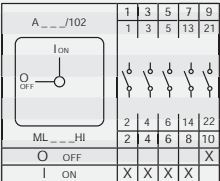
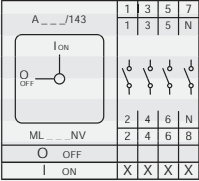
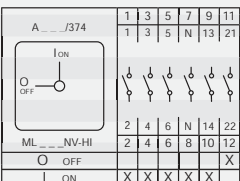
Abmessungen / Dimensions  
Baupform / Design: 0200 / 0200.02  
Baureihe / Series: MLO



Abmessungen / Dimensions  
Baupform / Design: 0200 / 0200.02 / 0400 / 0400.02 / 0600 / 0600.02  
Baureihe / Series: ML1-ML3



Baureihe Series	Abmessungen (mm) Dimensions (mm)								
	A	B1	D	E	F	G	H	I	Q
MLO	36	4,5		60	60	49	29	48	6
ML1	36	4,5	44	44	50	55	29	48	6
ML2	48	5,5	58	58	72	75	33	64	6
ML3	68	5,5	78	78	72	80	35	88	6

Schaltprogramm Contact arrangement	Dauerstrom I <sub>th</sub> Rated Uninterrupted current I <sub>th</sub> A	Leistung Rating AC 3 kW	Leistung Rating AC 23A kW	Baureihe Series	Griff/ Frontschild handle/ front plate	Typ Type	Best.Nr. Part #
<b>3-polig</b> <b>3-pole</b> 	25	7,5	7,5	MLO	rt/ge rd/ye	ML0-016-3E-0200.02	<b>MZ 57 311</b>
	25	7,5	7,5	MLO	sw/si bk/si	ML0-016-3E-0200	<b>MZ 57 310</b>
	32	9	9	MLO	rt/ge rd/ye	ML0-032-3E-0200.02	<b>MZ 59 311</b>
	32	9	9	MLO	sw/si bk/si	ML0-032-3E-0200	<b>MZ 59 310</b>
	25	7,5	11	ML1	rt/ge rd/ye	ML1-025-E-0200.02	<b>MZ 33 065</b>
	25	7,5	11	ML1	sw/si bk/si	ML1-025-E-0200	<b>MZ 33 057</b>
	40	11	15	ML1	rt/ge rd/ye	ML1-040-E-0200.02	<b>MZ 35 065</b>
	40	11	15	ML1	sw/si bk/si	ML1-040-E-0200	<b>MZ 35 057</b>
	63	22	30	ML2	rt/ge rd/ye	ML2-063-E-0400.02	<b>MZ 37 065</b>
	63	22	30	ML2	sw/si bk/si	ML2-063-E-0400	<b>MZ 37 057</b>
	80	30	37	ML2	rt/ge rd/ye	ML2-080-E-0400.02	<b>MZ 39 065</b>
	80	30	37	ML2	sw/si bk/si	ML2-080-E-0400	<b>MZ 39 057</b>
	125	37	45	ML3	rt/ge rd/ye	ML3-125-E-0600.02	<b>MZ 41 065</b>
	125	37	45	ML3	sw/si bk/si	ML3-125-E-0600	<b>MZ 41 057</b>
<b>3-polig + 1S + 1Ö</b> <b>3-pole + 1NC + 1NO</b> 	25	7,5	7,5	MLO	rt/ge rd/ye	ML0-016-3E-0200.02-HI	<b>MZ 57 373</b>
	25	7,5	7,5	MLO	sw/si bk/si	ML0-016-3E-0200-HI	<b>MZ 57 372</b>
	32	9	9	MLO	rt/ge rd/ye	ML0-032-3E-0200.02-HI	<b>MZ 59 373</b>
	32	9	9	MLO	sw/si bk/si	ML0-032-3E-0200-HI	<b>MZ 59 372</b>
	25	7,5	11	ML1	rt/ge rd/ye	ML1-025-E-0200.02-HI	<b>MZ 33 068</b>
	25	7,5	11	ML1	sw/si bk/si	ML1-025-E-0200-HI	<b>MZ 33 067</b>
	40	11	15	ML1	rt/ge rd/ye	ML1-040-E-0200.02-HI	<b>MZ 35 068</b>
	40	11	15	ML1	sw/si bk/si	ML1-040-E-0200-HI	<b>MZ 35 067</b>
	63	22	30	ML2	rt/ge rd/ye	ML2-063-E-0400.02-HI	<b>MZ 37 068</b>
	63	22	30	ML2	sw/si bk/si	ML2-063-E-0400-HI	<b>MZ 37 067</b>
	80	30	37	ML2	rt/ge rd/ye	ML2-080-E-0400.02-HI	<b>MZ 39 068</b>
	80	30	37	ML2	sw/si bk/si	ML2-080-E-0400-HI	<b>MZ 39 067</b>
	125	37	45	ML3	rt/ge rd/ye	ML3-125-E-0600.02-HI	<b>MZ 41 068</b>
	125	37	45	ML3	sw/si bk/si	ML3-125-E-0600-HI	<b>MZ 41 067</b>
<b>4-polig</b> <b>4-pole</b> 	25	7,5	7,5	MLO	rt/ge rd/ye	ML0-016-4E-0200.02	<b>MZ 57 611</b>
	25	7,5	7,5	MLO	sw/si bk/si	ML0-016-4E-0200	<b>MZ 57 610</b>
	32	9	9	MLO	rt/ge rd/ye	ML0-032-4E-0200.02	<b>MZ 59 611</b>
	32	9	9	MLO	sw/si bk/si	ML0-032-4E-0200	<b>MZ 59 610</b>
	25	7,5	11	ML1	rt/ge rd/ye	ML1-025-E-0200.02-NV	<b>MZ 33 066</b>
	25	7,5	11	ML1	sw/si bk/si	ML1-025-E-0200-NV	<b>MZ 33 061</b>
	40	11	15	ML1	rt/ge rd/ye	ML1-040-E-0200.02-NV	<b>MZ 35 066</b>
	40	11	15	ML1	sw/si bk/si	ML1-040-E-0200-NV	<b>MZ 35 061</b>
	63	22	30	ML2	rt/ge rd/ye	ML2-063-E-0400.02-NV	<b>MZ 37 066</b>
	63	22	30	ML2	sw/si bk/si	ML2-063-E-0400-NV	<b>MZ 37 061</b>
	80	30	37	ML2	rt/ge rd/ye	ML2-080-E-0400.02-NV	<b>MZ 39 066</b>
	80	30	37	ML2	sw/si bk/si	ML2-080-E-0400-NV	<b>MZ 39 061</b>
	125	37	45	ML3	rt/ge rd/ye	ML3-125-E-0600.02-NV	<b>MZ 41 066</b>
	125	37	45	ML3	sw/si bk/si	ML3-125-E-0600-NV	<b>MZ 41 061</b>
<b>4-polig + 1S + 1Ö</b> <b>4-pole + 1NC + 1NO</b> 	25	7,5	7,5	MLO	rt/ge rd/ye	ML0-016-4E-0200.02-HI	<b>MZ 57 673</b>
	25	7,5	7,5	MLO	sw/si bk/si	ML0-016-4E-0200-HI	<b>MZ 57 672</b>
	32	9	9	MLO	rt/ge rd/ye	ML0-032-4E-0200.02-HI	<b>MZ 59 673</b>
	32	9	9	MLO	sw/si bk/si	ML0-032-4E-0200-HI	<b>MZ 59 672</b>
	25	7,5	11	ML1	rt/ge rd/ye	ML1-025-E-0200.02-NV-HI	<b>MZ 33 080</b>
	25	7,5	11	ML1	sw/si bk/si	ML1-025-E-0200-NV-HI	<b>MZ 33 086</b>
	40	11	15	ML1	rt/ge rd/ye	ML1-040-E-0200.02-NV-HI	<b>MZ 35 080</b>
	40	11	15	ML1	sw/si bk/si	ML1-040-E-0200-NV-HI	<b>MZ 35 086</b>
	63	22	30	ML2	rt/ge rd/ye	ML2-063-E-0400.02-NV-HI	<b>MZ 37 080</b>
	63	22	30	ML2	sw/si bk/si	ML2-063-E-0400-NV-HI	<b>MZ 37 086</b>
	80	30	37	ML2	rt/ge rd/ye	ML2-080-E-0400.02-NV-HI	<b>MZ 39 080</b>
	80	30	37	ML2	sw/si bk/si	ML2-080-E-0400-NV-HI	<b>MZ 39 086</b>
	125	37	45	ML3	rt/ge rd/ye	ML3-125-E-0600.02-NV-HI	<b>MZ 41 080</b>
	125	37	45	ML3	sw/si bk/si	ML3-125-E-0600-NV-HI	<b>MZ 41 086</b>